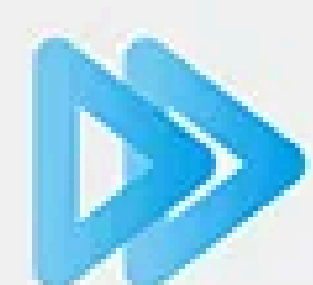
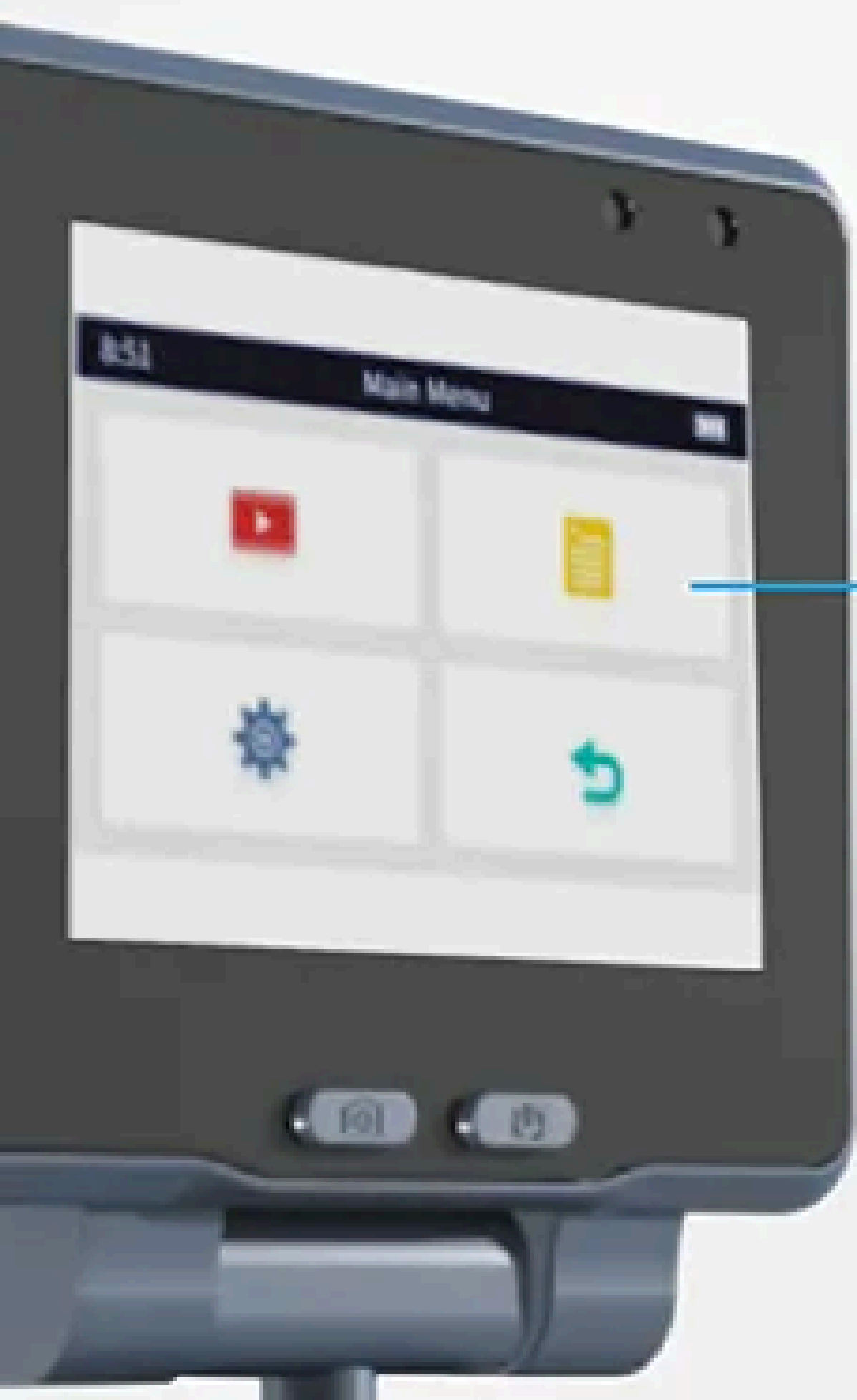


VIDEO LARYNGOSCOPE



New design CMS-GS1



- **3.5" INCH LCD DISPLAY**
High resolution 3.5" LCD display, designed for maximum visibility.

HD CAMERA WITH LEDs

2MP HD camera, High Definition Anti Fog lens and integrated 4 LED light sources can deliver up to 1100 lux brightness.



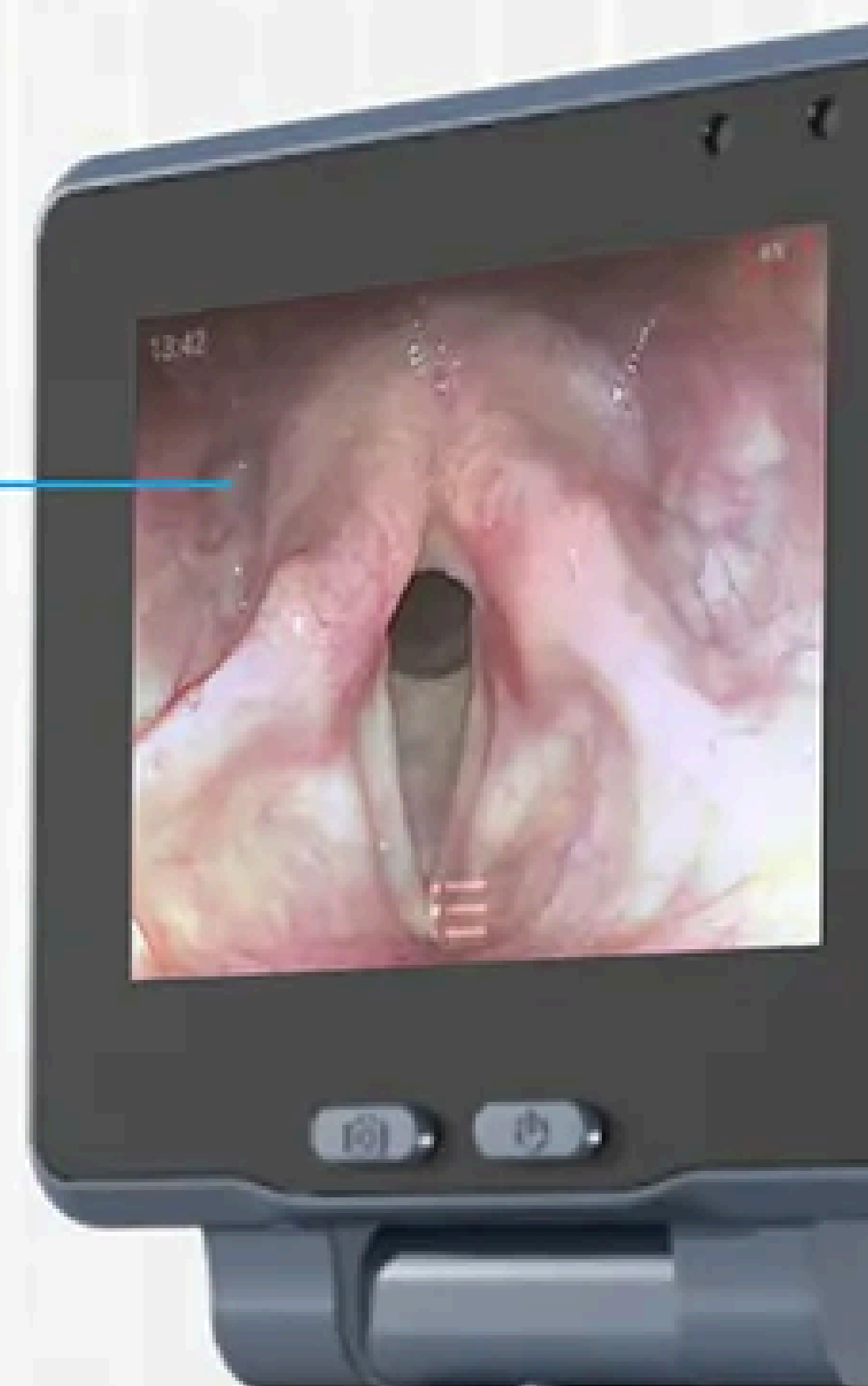
before



after

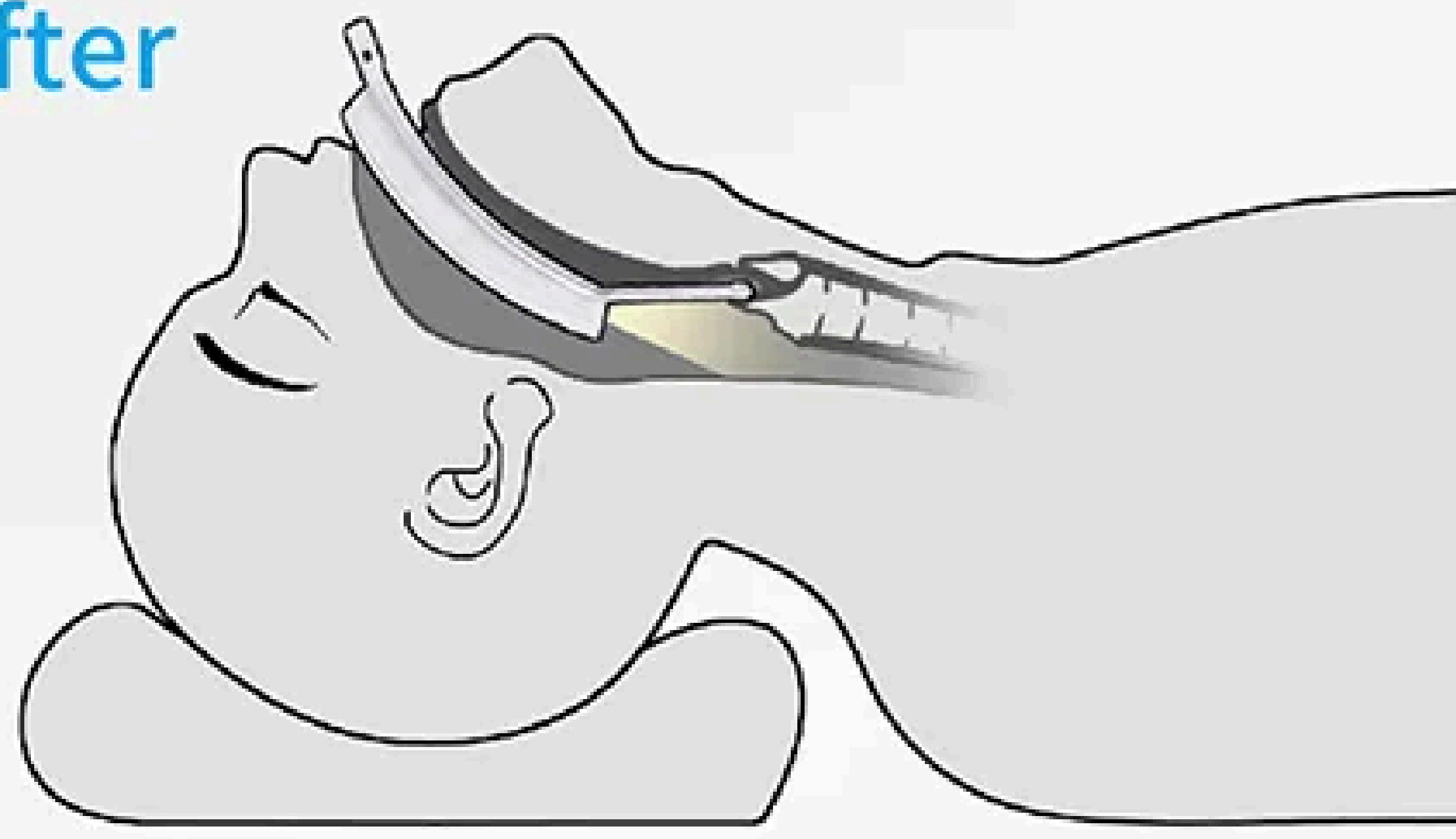
FIELD OF VIEW

Wider area and allows doctors to clearly observe the larynx.



before

after



▶▶ G series Blades



🔹 G2 Child



🔹 G3 Adult




🔹 G4 Adult Large





Technical Specification

Five solution for the Intubation

 Safety	 Fast	HD High- Definition	 Easy	 Cost Effective
<ul style="list-style-type: none"> • Ergonomic and durable design for long time usage • High quality material with anti shatter protection for whole unit • Disposable Blades avoid cross infection • Anti- Fog Lens and Anti-Microbial Handle 	<ul style="list-style-type: none"> • Fast intubation after short time training • Fast install or remove disposable blade • Lightweight and portable 	<ul style="list-style-type: none"> • 3.5 inch anti- reflective full touch display with 640*480 resolution • 2.0 Mega Pixel Camera provide 1280*720P photo and video • Rotation angle for up-down $\geq 120^\circ$ and left-right $\geq 270^\circ$ 	<ul style="list-style-type: none"> • One shot button for Recording • One cable connect to PC for data management • Full touch scree with user friendly operation 	<ul style="list-style-type: none"> • Favorable cost for all kinds of disposable blades • Rechargeable battery for at least 2 hours working time

Suitable for

- Difficult intubation of glottic opening, easily guide the medical staff to accurately perform endotracheal intubation for anesthesia or first aid.

Technical Specifications

Display	Monitor: LCD
	Resolution Ratio: 640X480RGB
	Aspect Ratio: 4:3
	Video refresh Rata: 30FPS
Data output	Easy to create and store files in JPEG or MP4 format. Connect to the computer via a USB micro cable.
Camera and image	Resolution Ratio 2.0M Pixels
	Field Angle: ≥60°
	Illuminance≥2500LUX
	Working distance: 20mm-100mm
	Color temperature ≥5000K
	Color reduction grade ≥6
Power and Battery	Type Rechargeable Lithium Battery
	Battery life Cycle: More Than 500 times
	AC100-240V, 50/60Hz, 50VA
	Charging times: less than 2hrs
Working Condition	Temperature: -10~+50℃
Size and weight	Product Size: 260.51*100.9*107.47mm; Product Weight:0.22kg
	Carton size: 340*250*195mm ; Weight: 1.93kg



G4 Adult large(6.0mm or more)



G3 Adult (6.0~9.0mm)



G2 Child (3.0~6.0mm)